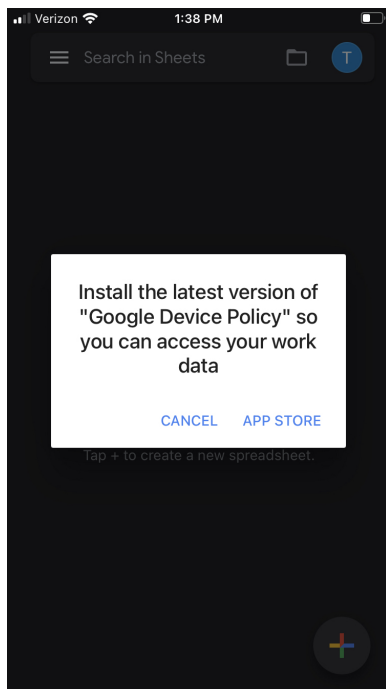


How to Connect your iPhone to your School @suffieldstudent.org account

We are providing these instructions as a courtesy, Suffield Public Schools does not support personal devices and therefore you assume full responsibility for downloading and engaging with these apps.

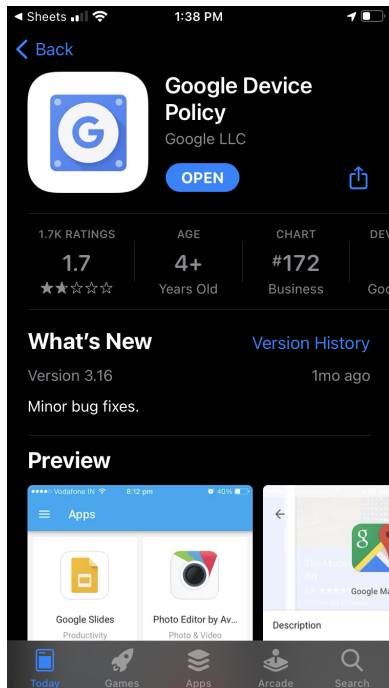
Download the Google Drive App onto your phone

- 1) When prompted to install the “Google Device Policy” select “App Store”

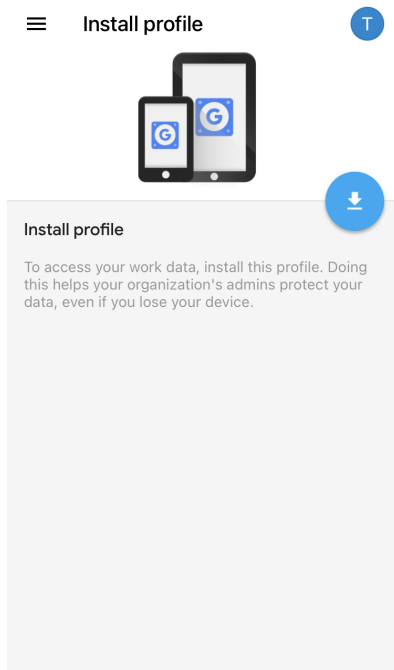


- 2) In the “App Store” select “Get” and then “Install” - your iPhone may require you to put in your AppleID Credentials, this depends on your individual settings.

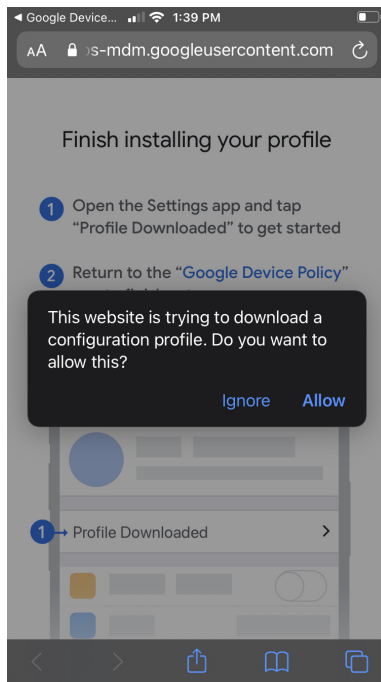
Once the app is done installing you will see the below window appear, click “open”



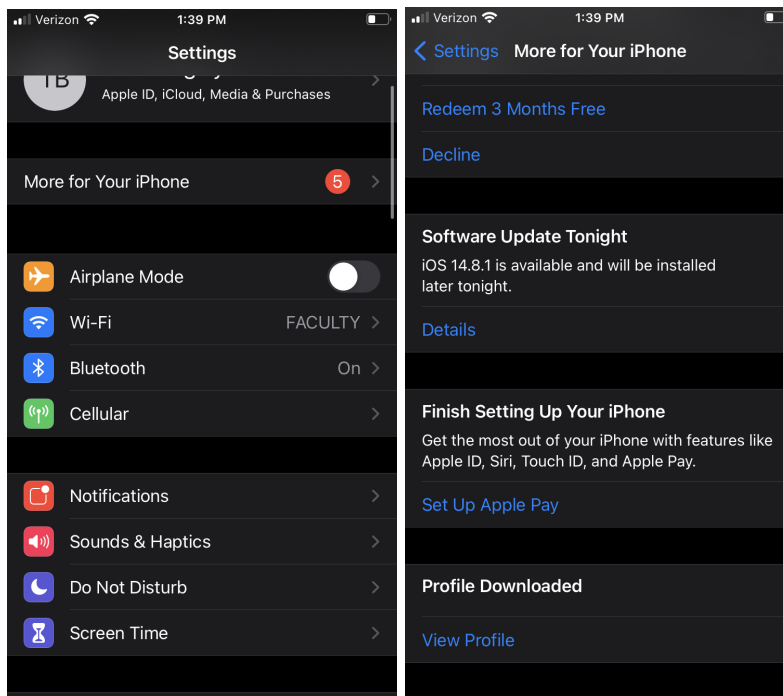
3) When the app opens select “Install Profile”



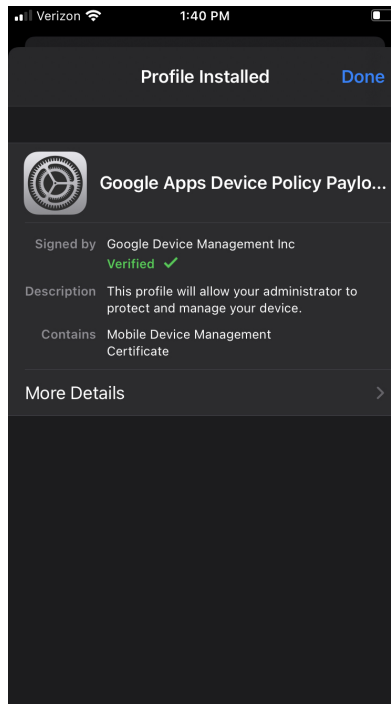
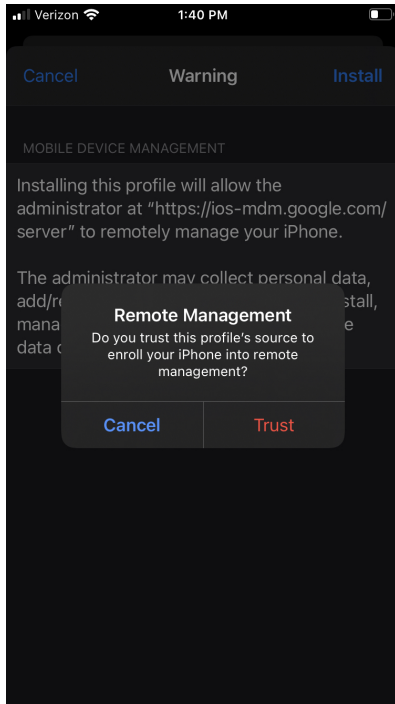
- 4) If Prompted select “Allow” (See below picture for example)



- 5) Open the Settings on your iPhone and Select “More for your iPhone” and scroll down to “Profile’s Downloaded” and select “View Profile”



- 6) Select “Install” and “Trust” when prompted, you can then select Done. This does not allow Suffield Public Schools access to your device, it allows the district control only over the Suffield data as it relates to google and your @suffieldstudent.org account.



- 7) Return to the Google Device Policy Application that you downloaded above and you will notice your device is now “Waiting for Approval”. Suffield Public Schools Technology Department will approve your device within 48 hours.

